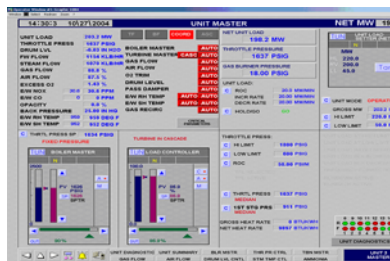


## Potrero Unit 3 Distributed Control System (DCS) Project

Mirant, L.L.C.



### LOCATION:

San Francisco, California

### PROJECTS & SERVICES:

- Managerial & Technical Consulting
- Engineering (Mechanical, Electrical, I&C)
- Planning/Project Management
- Quality Assurance/Quality Control
- Operations & Maintenance
- Design

### PROJECT OVERVIEW:

Source California Energy Services, Inc. (SCES) provided engineering services for the installation of a new Distributed Control System (DCS) to replace the existing pneumatic boiler controls and existing WDPF DCS system. The scope of this project included:

- Boiler Controls
- Turbine Controls
- Burner Management System
- Sequence of Events Alarming
- Plant Alarm Annunciator and Alarm Management
- Operator Consoles
- Engineering Workstation
- Database Development
- SCR System Control Interface
- Balance-of-Plant Systems
- Field Installation of Required New Instrumentation

A DCS supplier was contracted to design and install the control system.

SCES's Project Manager completed the work on time according to project schedule and within budget. Provided assistance in design engineering review; equipment procurement which included proposal evaluation, conducting fabrication inspections at the vendor's factory, and monitoring equipment shipment and inspection of equipment. The Project Manager also managed the integration design of the new DCS hardware into the existing plant systems including supporting electrical services.

The installation of equipment included assistance in the preparation of construction bid packages; evaluation of construction bid package with project team; coordinated work with the Production Team and Outage Manager; monitored installation and construction; and obtained as-built drawings.

Routine project status reports were prepared which covered the work accomplished during a time period; unforeseen work and actions to mitigate; work expected within the next report period, budget vs. actual expenditures; and work progress vs. schedule.

This effort included startup and acceptance test plan and assistance in conducting the test; developed operator and maintenance training schedule.

Project closure documentation includes declaration operations date of system; transferred responsibilities of plant operations; and complete entry of documentation into client's documentation management system.